

# Anti-TUBA1B/Alpha Tubulin Antibody (SAA0528)

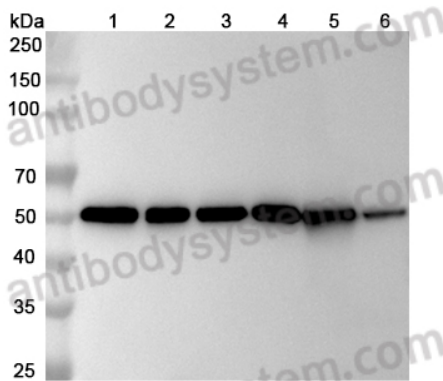
## Summary

---

<b>Catalog No.</b>	RHF62201
<b>Clone ID</b>	SAA0528
<b>Host species</b>	Mouse
<b>Species reactivity</b>	Human, Mouse
<b>Form</b>	Liquid
<b>Storage buffer</b>	0.01M PBS, pH 7.4.
<b>Concentration</b>	0.74 mg/ml
<b>Purity</b>	>95% as determined by SDS-PAGE.
<b>Clonality</b>	Monoclonal
<b>Isotype</b>	IgG2a, kappa
<b>Applications</b>	ELISA, IF, WB
<b>Target</b>	Tubulin alpha-ubiquitous chain, Tubulin alpha-1B chain, Alpha-tubulin ubiquitous, Tubulin K-alpha-1, TUBA1B
<b>Purification</b>	Protein A/G purified from cell culture supernatant.
<b>Endotoxin level</b>	Please contact with the lab for this information.
<b>Accession</b>	P68363
<b>Stability and Storage</b>	Use a manual defrost freezer and avoid repeated freeze-thaw cycles. Store at 4°C short term (1-2 weeks). Store at -20°C 12 months. Store at -80°C long term.
<b>Note</b>	For research use only.

## Data Image

---



Western Blot

Various lysates were subjected to SDS PAGE followed by western blot with TUBA1B/Alpha Tubulin antibody (RHF62201) at 1µg/ml.

Lane 1: Hela cell lysate

Lane 2: MCF-7 cell lysate

Lane 3: NIH3T3 cell lysate

Lane 4: PC-12 cell lysate

Lane 5: Mouse lung lysate

Lane 6: Rat lung lysate

Second Ab: Goat Anti-Mouse IgG H&L Polyclonal antibody, HRP (PMB96431) at 0.1 µg/mL.

Predict MW: 55 kDa

Observed MW: 55 kDa