

# Anti-Human VEGFA Antibody (SAA0531)

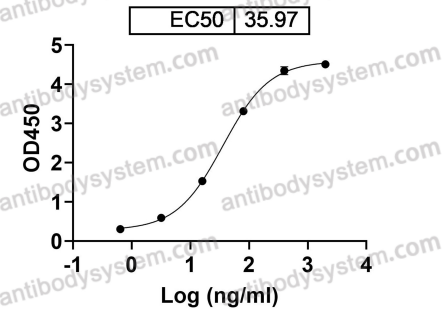
## Summary

---

<b>Catalog No.</b>	RHD12601
<b>Clone ID</b>	SAA0531
<b>Host species</b>	Rabbit
<b>Species reactivity</b>	Human
<b>Form</b>	Liquid
<b>Storage buffer</b>	0.01M PBS, pH 7.4.
<b>Concentration</b>	1 mg/ml
<b>Purity</b>	>95% as determined by SDS-PAGE.
<b>Clonality</b>	Monoclonal
<b>Isotype</b>	IgG
<b>Applications</b>	ELISA, FCM
<b>Target</b>	Vascular endothelial growth factor A, VPF, VEGFA, VEGF, Vascular permeability factor, VEGF-A
<b>Purification</b>	Protein A/G purified from cell culture supernatant.
<b>Endotoxin level</b>	Please contact with the lab for this information.
<b>Accession</b>	P15692
<b>Stability and Storage</b>	Use a manual defrost freezer and avoid repeated freeze-thaw cycles. Store at 4°C short term (1-2 weeks). Store at -20°C 12 months. Store at -80°C long term.
<b>Note</b>	For research use only.

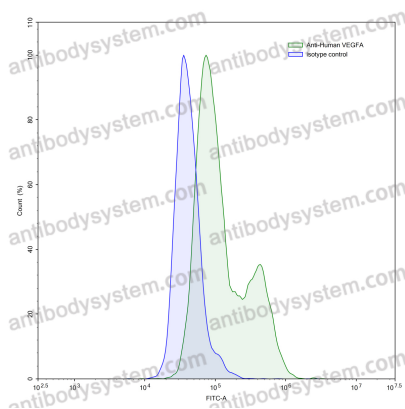
## Data Image

**Anti-Human VEGFA Antibody (SAA0531)  
binds with VEGFA**



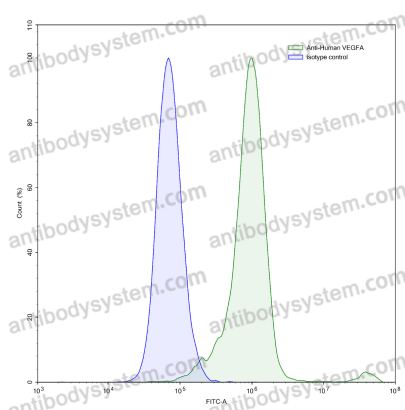
**Bioactivity**

Detects Human VEGFA in indirect ELISAs.



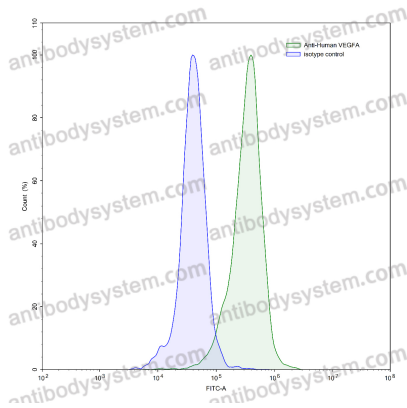
**Flow-cytometry**

Flow-cytometry using anti-human VEGFA antibody. VEGFA Transfected CHO cells were stained with an irrelevant antibody (Blue Histogram) or an anti-human VEGFA antibody monoclonal antibody (Catalog # RHD12601, Green Histogram) at a concentration of 5 µg/ml for 30 mins at RT. After washing, bound antibody was detected using a FITC conjugated goat anti-rabbit antibody (Catalog # PTB96441) and cells analysed on a NovoCyt Flow Cytometer.



**Flow-cytometry**

Flow-cytometry using anti-human VEGFA antibody. HeLa cells were stained with an irrelevant antibody (Blue Histogram) or an anti-human VEGFA antibody monoclonal antibody (Catalog # RHD12601, Green Histogram) at a concentration of 5 µg/ml for 30 mins at RT. After washing, bound antibody was detected using a FITC conjugated goat anti-rabbit antibody (Catalog # PTB96441) and cells analysed on a NovoCyt Flow Cytometer.



Flow-cytometry

Flow-cytometry using anti-human VEGFA antibody.U937 cells were stained with an irrelevant antibody (Blue Histogram) or an anti-human VEGFA antibody monoclonal antibody (Catalog # RHD12601 ,Green Histogram) at a concentration of 5 µg/ml for 30 mins at RT. After washing, bound antibody was detected using a FITC conjugated goat anti-rabbit antibody (Catalog # PTB96441) and cells analysed on a NovoCyte Flow Cytometer.