

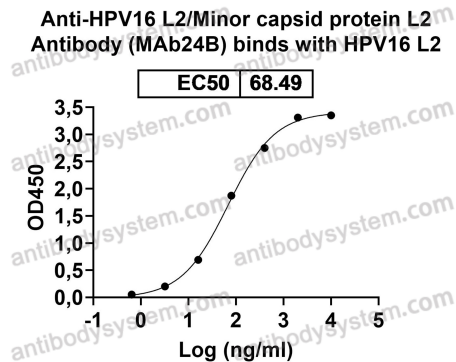
Anti-HPV16 L2/Minor capsid protein L2 Antibody (MAb24B)

Summary

Catalog No.	RVV20801
Clone ID	MAb24B
Host species	Human
Species reactivity	Human papillomavirus type (HPV16, HPV18, HPV31, HPV33, HPV35, HPV51, HPV52, HPV58)
Form	Liquid
Storage buffer	0.01M PBS, pH 7.4.
Concentration	2.44 mg/ml
Purity	>95% as determined by SDS-PAGE.
Clonality	Monoclonal
Isotype	IgG1, kappa
Applications	ELISA, WB
Target	Minor capsid protein L2, L2
Purification	Protein A/G purified from cell culture supernatant.
Endotoxin level	Please contact with the lab for this information.
Accession	P03107
Stability and Storage	Use a manual defrost freezer and avoid repeated freeze-thaw cycles. Store at 4°C short term (1-2 weeks). Store at -20°C 12 months. Store at -80°C long term.

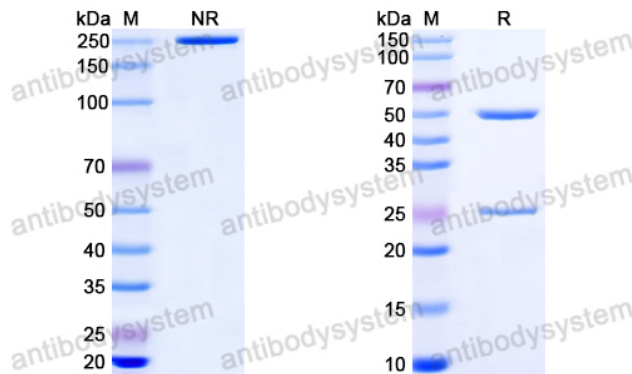
Note For research use only.

Data Image



Detects Human papillomavirus type 16 L2/Minor capsid protein L2 in indirect ELISAs.

Bioactivity

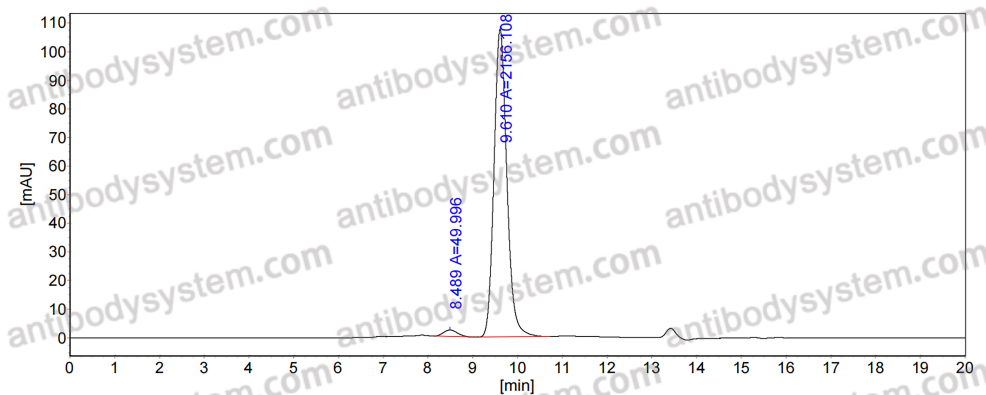


SDS PAGE for HPV16 L2/Minor capsid protein L2 Antibody (MAb24B)

SDS-PAGE



Recombinant Proteins & Antibodies



SEC-HPLC

The purity of this product is >95% as determined by SEC-HPLC.