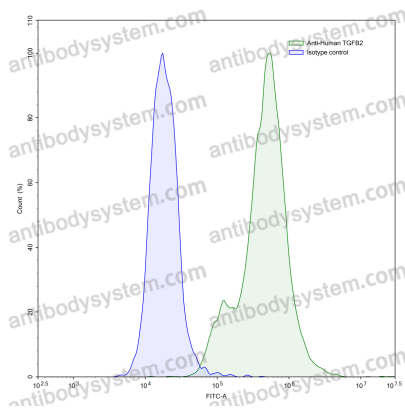


InVivoMAb Anti-Human TGFB2/TGF-beta-2 (Iv0070)

Summary

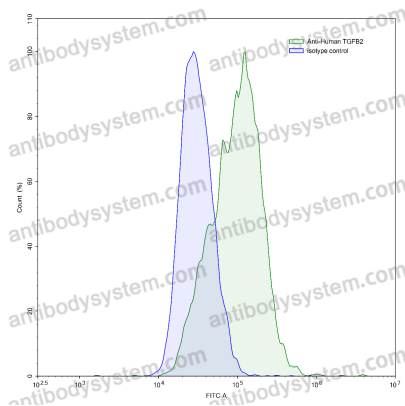
Catalog No.	VHF46301
Clone ID	Iv0070
Host species	Human
Species reactivity	Human
Form	Liquid
Storage buffer	0.01M PBS, pH 7.4.
Concentration	1 mg/ml
Purity	>95% as determined by SDS-PAGE.
Clonality	Monoclonal
Isotype	IgG4
Applications	ELISA, FCM, Neutralization
Target	Glioblastoma-derived T-cell suppressor factor, TGF-beta-2, LAP, G-TSF, TGFB2, Cetermin, Transforming growth factor beta-2 proprotein
Purification	Protein A/G purified from cell culture supernatant.
Endotoxin level	Please contact with the lab for this information.
Accession	P61812
Stability and Storage	Use a manual defrost freezer and avoid repeated freeze-thaw cycles. Store at 4°C short term (1-2 weeks). Store at -20°C 12 months. Store at -80°C long term.
Note	For research use only. Not suitable for clinical or therapeutic use.

Data Image



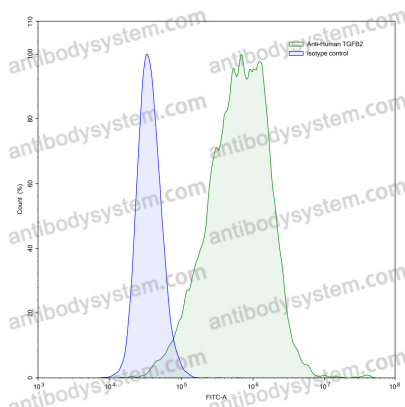
Flow-cytometry

Flow-cytometry using anti-human TGFB2 antibody. TGFB2 Transfected CHO cells were stained with an irrelevant antibody (Blue Histogram) or an anti-human TGFB2 antibody monoclonal antibody (Catalog # VHF46301, Green Histogram) at a concentration of 5 µg/ml for 30 mins at RT. After washing, bound antibody was detected using a FITC conjugated goat anti-human antibody (Catalog # PHB96441) and cells analysed on a NovoCyte Flow Cytometer.



Flow-cytometry

Flow-cytometry using anti-human TGFB2 antibody. HUVEC cells were stained with an irrelevant antibody (Blue Histogram) or an anti-human TGFB2 antibody monoclonal antibody (Catalog # VHF46301, Green Histogram) at a concentration of 5 µg/ml for 30 mins at RT. After washing, bound antibody was detected using a FITC conjugated goat anti-human antibody (Catalog # PHB96441) and cells analysed on a NovoCyte Flow Cytometer.



Flow-cytometry

Flow-cytometry using anti-human TGFB2 antibody. PC-3 cells were stained with an irrelevant antibody (Blue Histogram) or an anti-human TGFB2 antibody monoclonal antibody (Catalog # VHF46301, Green Histogram) at a concentration of 5 µg/ml for 30 mins at RT. After washing, bound antibody was detected using a FITC conjugated goat anti-human antibody (Catalog # PHB96441) and cells analysed on a NovoCyte Flow Cytometer.