

# Anti-Human CD112/Nectin-2/PVRL2 Antibody (SAA0405)

## Summary

---

<b>Catalog No.</b>	FHJ32510
<b>Clone ID</b>	SAA0405
<b>Host species</b>	Mouse
<b>Conjugation</b>	Unconjugated
<b>Species reactivity</b>	Human
<b>Form</b>	Liquid
<b>Storage buffer</b>	0.01M PBS, pH 7.4
<b>Concentration</b>	1.44 mg/ml
<b>Purity</b>	>95% as determined by SDS-PAGE.
<b>Clonality</b>	Monoclonal
<b>Isotype</b>	IgG2a, kappa
<b>Applications</b>	ELISA, FCM
<b>Target</b>	Herpesvirus entry mediator B, Herpes virus entry mediator B, Nectin cell adhesion molecule 2, HVEB, PVRL2 receptor-related protein 2, CD112, PRR2, Nectin-2, HveB, NECTIN2
<b>Purification</b>	Protein A/G purified from cell culture supernatant.
<b>Endotoxin level</b>	Please contact with the lab for this information.
<b>Accession</b>	Q92692

### Stability and Storage

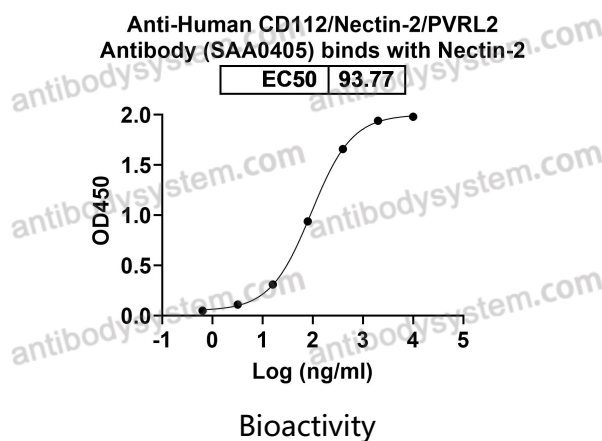
Use a manual defrost freezer and avoid repeated freeze-thaw cycles.

Store at 4°C short term (1-2 weeks). Store at -20°C 12 months. Store at -80°C long term.

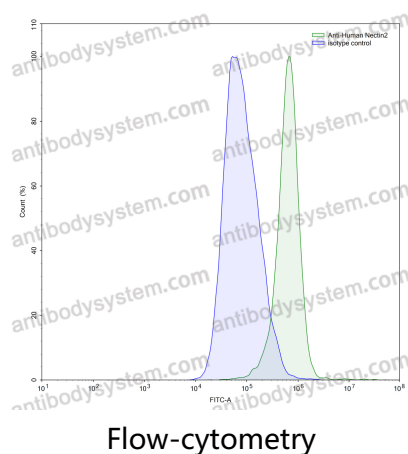
### Note

For research use only.

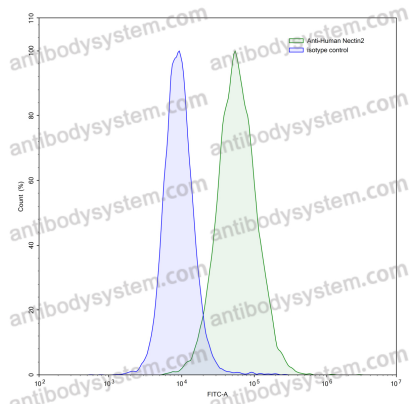
## Data Image



Detects CD112/Nectin-2/PVRL2 in indirect ELISAs.

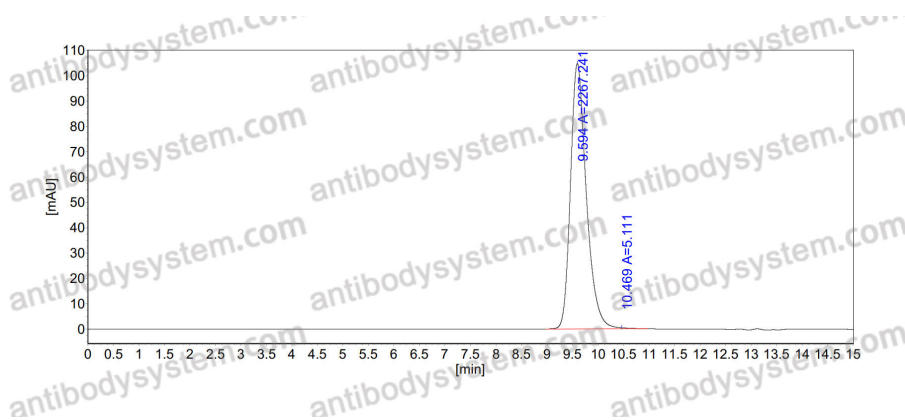


Flow-cytometry using anti-human Nectin2 antibody. K562 cells were stained with an irrelevant antibody (Blue Histogram) or an anti-human Nectin2 antibody monoclonal antibody (Catalog # FHJ32510, Green Histogram) at a concentration of 5 µg/ml for 30 mins at RT. After washing, bound antibody was detected using a FITC conjugated goat anti-mouse antibody (Catalog # PMB96441) and cells analysed on a NovoCyt Flow Cytometer.



Flow-cytometry

Flow-cytometry using anti-human Nectin2 antibody.KG-1 cells were stained with an irrelevant antibody (Blue Histogram) or an anti-human Nectin2 antibody monoclonal antibody (Catalog # FHJ32510 ,Green Histogram) at a concentration of 5 µg/ml for 30 mins at RT. After washing, bound antibody was detected using a FITC conjugated goat anti-mouse antibody (Catalog # PMB96441) and cells analysed on a NovoCyt Flow Cytometer.



SEC-HPLC

The purity of this product is >95% as determined by SEC-HPLC.