

# Anti-Human CCL2/MCP-1 Antibody (11k2)

## Summary

---

<b>Catalog No.</b>	FHC97810
<b>Clone ID</b>	11k2
<b>Host species</b>	Mouse
<b>Conjugation</b>	Unconjugated
<b>Species reactivity</b>	Human
<b>Form</b>	Liquid
<b>Storage buffer</b>	0.01M PBS, pH 7.4, 0.09% Sodium azide.
<b>Concentration</b>	1 mg/ml
<b>Purity</b>	>95% as determined by SDS-PAGE.
<b>Clonality</b>	Monoclonal
<b>Isotype</b>	IgG2a, kappa
<b>Applications</b>	Blocking, ELISA, FCM
<b>Target</b>	HC11, MCP-1, MCP1, Monocyte chemotactic protein 1, Monocyte chemotactic and activating factor, Small-inducible cytokine A2, SCYA2, MCAF, Monocyte secretory protein JE, C-C motif chemokine 2, Monocyte chemoattractant protein 1, CCL2
<b>Purification</b>	Protein A/G purified from cell culture supernatant.
<b>Endotoxin level</b>	Please contact with the lab for this information.
<b>Accession</b>	P13500

## Stability and Storage

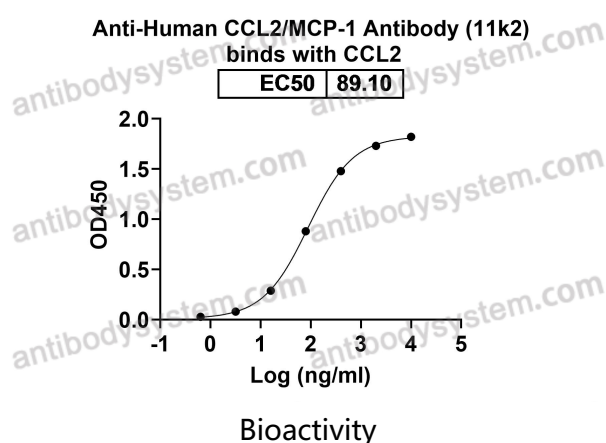
Use a manual defrost freezer and avoid repeated freeze-thaw cycles.

Store at 4°C short term (1-2 weeks). Store at -20°C 12 months. Store at -80°C long term.

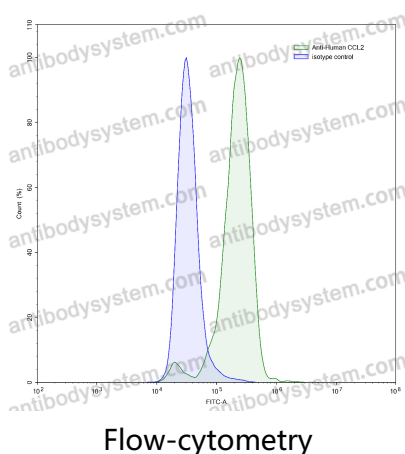
## Note

For research use only.

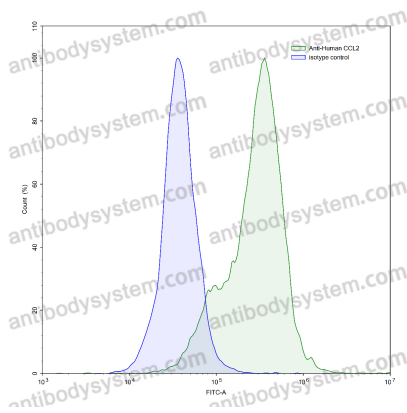
## Data Image



Detects CCL2/MCP-1 in indirect ELISAs.



Flow-cytometry using anti-human CCL2 antibody. A549 cells were stained with an irrelevant antibody (Blue Histogram) or an anti-human CCL2 antibody monoclonal antibody (Catalog # FHC97810, Green Histogram) at a concentration of 5 µg/ml for 30 mins at RT. After washing, bound antibody was detected using a FITC conjugated goat anti-mouse antibody (Catalog # PMB96441) and cells analysed on a NovoCyte Flow Cytometer.



Flow-cytometry

Flow-cytometry using anti-human CCL2 antibody. LPS treated THP-1 cells were stained with an irrelevant antibody (Blue Histogram) or an anti-human CCL2 antibody monoclonal antibody (Catalog # FHC97810, Green Histogram) at a concentration of 5 µg/ml for 30 mins at RT. After washing, bound antibody was detected using a FITC conjugated goat anti-mouse antibody (Catalog # PMB96441) and cells analysed on a NovoCyt Flow Cytometer.