

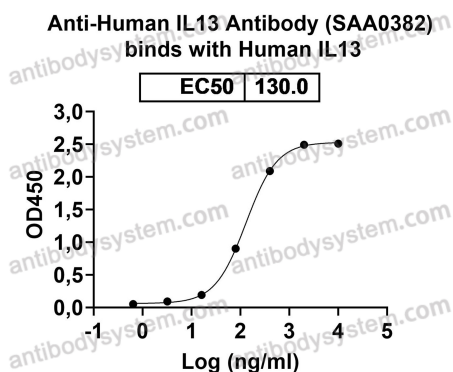
# Anti-Human IL13 Antibody (SAA0382)

## Summary

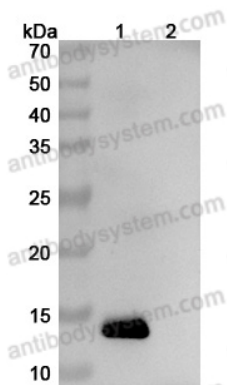
---

<b>Catalog No.</b>	FHE07710
<b>Clone ID</b>	SAA0382
<b>Host species</b>	Mouse
<b>Conjugation</b>	Unconjugated
<b>Species reactivity</b>	Human
<b>Form</b>	Liquid
<b>Storage buffer</b>	0.01M PBS, pH 7.4, 0.09% Sodium azide.
<b>Concentration</b>	1 mg/ml
<b>Purity</b>	>95% as determined by SDS-PAGE.
<b>Clonality</b>	Monoclonal
<b>Isotype</b>	IgG1, kappa
<b>Applications</b>	ELISA, FCM
<b>Target</b>	IL13, NC30, Interleukin-13, IL-13
<b>Purification</b>	Protein A/G purified from cell culture supernatant.
<b>Endotoxin level</b>	Please contact with the lab for this information.
<b>Accession</b>	P35225
<b>Stability and Storage</b>	Use a manual defrost freezer and avoid repeated freeze-thaw cycles. Store at 4°C short term (1-2 weeks). Store at -20°C 12 months. Store at -80°C long term.
<b>Note</b>	For research use only.

## Data Image



Bioactivity



Western blot

Detects Human IL13 in indirect ELISAs.

Various lysates were subjected to SDS PAGE followed by western blot with Human IL13 antibody (FHE07710) at 1µg/ml.

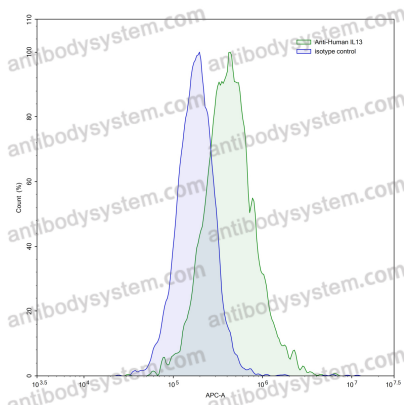
Lane 1: Human IL13 transfected HEK293 cell lysate

Lane 2: Non-transfected HEK293 cell lysate

Second Ab: Goat Anti-Mouse IgG H&L Polyclonal antibody, HRP (PMB96431) at 0.1 µg/mL.

Predict MW: 14 kDa

Observed MW: 14 kDa



Flow-cytometry

Flow-cytometry using anti-human IL13 antibody. Transfected CHO cells were stained with an irrelevant antibody (Blue Histogram) or an anti-human IL13 antibody monoclonal antibody (Catalog # FHE07710, Green Histogram) at a concentration of 5 µg/ml for 30 mins at RT. After washing, bound antibody was detected using a FITC conjugated goat anti-mouse antibody (Catalog # PMB96441) and cells analysed on a NovoCyt Flow Cytometer.