

# Anti-Human IL12B/IL-12 p40/NKSF2 Antibody (SAA0381)

## Summary

---

|                           |   |
|---------------------------|---|
| <b>Catalog No.</b>        | FHD84010  |
| <b>Clone ID</b>           | SAA0381   |
| <b>Host species</b>       | Mouse   |
| <b>Conjugation</b>        | Unconjugated  |
| <b>Species reactivity</b> | Human   |
| <b>Form</b>               | Liquid  |
| <b>Storage buffer</b>     | 0.01M PBS, pH 7.4, 0.09% Sodium azide.  |
| <b>Concentration</b>      | 1 mg/ml   |
| <b>Purity</b>             | >95% as determined by SDS-PAGE.   |
| <b>Clonality</b>          | Monoclonal  |
| <b>Isotype</b>            | IgG1, lambda  |
| <b>Applications</b>       | ELISA, FCM  |
| <b>Target</b>             | IL-12 subunit p40, IL12B, Interleukin-12 subunit beta, IL-12B, CLMF p40, NKSF2, NK cell stimulatory factor chain 2, Cytotoxic lymphocyte maturation factor 40 kDa subunit |
| <b>Purification</b>       | Protein A/G purified from cell culture supernatant.   |
| <b>Endotoxin level</b>    | Please contact with the lab for this information.   |
| <b>Accession</b>          | P29460  |

## Stability and Storage

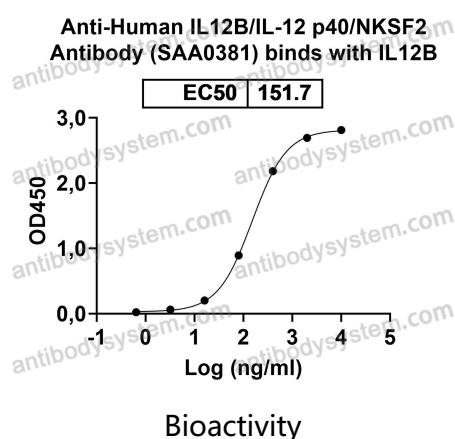
Use a manual defrost freezer and avoid repeated freeze-thaw cycles.

Store at 4°C short term (1-2 weeks). Store at -20°C 12 months. Store at -80°C long term.

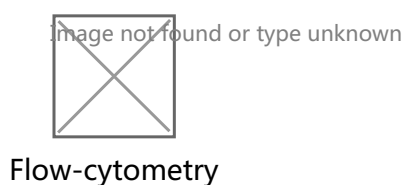
## Note

For research use only.

## Data Image



Detects Human IL12B/IL-12 p40/NKSF2 in indirect ELISAs.



Flow-cytometry using anti-human IL12B antibody. IL12B Transfected CHO cells were stained with an irrelevant antibody (Blue Histogram) or an anti-human IL12B antibody monoclonal antibody (Catalog # FHD84010, Green Histogram) at a concentration of 5 µg/ml for 30 mins at RT. After washing, bound antibody was detected using a FITC conjugated goat anti-mouse antibody (Catalog # PMB96441) and cells analysed on a NovoCyte Flow Cytometer.