

Anti-Human IL6 Antibody (SAA0375)

Summary

Catalog No.	FHC15810
Clone ID	SAA0375
Host species	Mouse
Conjugation	Unconjugated
Species reactivity	Human
Form	Liquid
Storage buffer	0.01M PBS, pH 7.4, 0.09% Sodium azide.
Concentration	1 mg/ml
Purity	>95% as determined by SDS-PAGE.
Clonality	Monoclonal
Isotype	IgG1, kappa
Applications	ELISA, FCM
Target	Hybridoma growth factor, BSF-2, IFN-beta-2, CDF, IL6, Interleukin-6, IL-6, B-cell stimulatory factor 2, Interferon beta-2, IFNB2, CTL differentiation factor
Purification	Protein A/G purified from cell culture supernatant.
Endotoxin level	Please contact with the lab for this information.
Accession	P05231

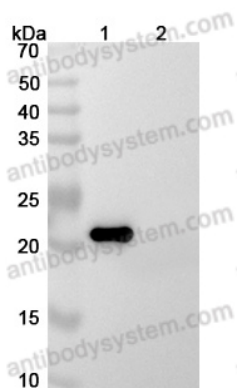
Stability and Storage

Use a manual defrost freezer and avoid repeated freeze-thaw cycles.

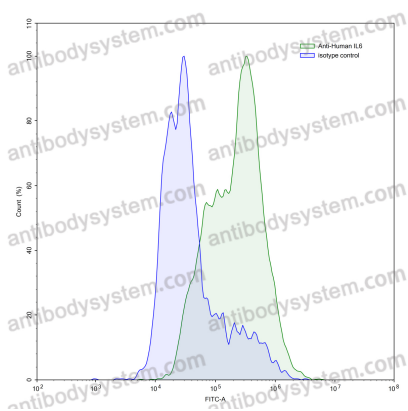
Store at 4°C short term (1-2 weeks). Store at -20°C 12 months. Store at -80°C long term.

Note

For research use only.

Data Image

Western Blot



Flow-cytometry

Various lysates were subjected to SDS PAGE followed by western blot with Anti Human IL6 antibody [SAA0375] (FHC15810) at 1µg/ml.

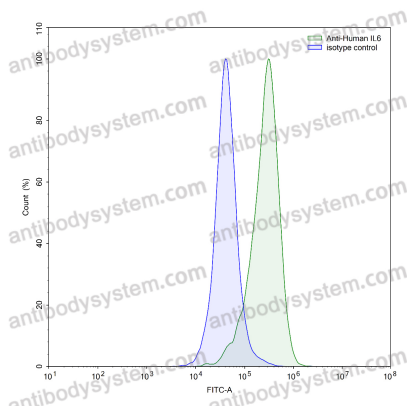
Lane 1: Human IL6 transfected HEK293 cell lysate

Lane 2: Non-transfected HEK293 cell lysate

Second Ab: Goat Anti-Mouse IgG H&L Polyclonal antibody, HRP (PMB96431) at 0.1 µg/mL.

Predict MW: 25 kDa

Flow-cytometry using anti-human IL6 antibody. IL6 Transfected CHO cells were stained with an irrelevant antibody (Blue Histogram) or an anti-human IL6 antibody monoclonal antibody (Catalog # FHC15810, Green Histogram) at a concentration of 5 µg/ml for 30 mins at RT. After washing, bound antibody was detected using a FITC conjugated goat anti-mouse antibody (Catalog # PMB96441) and cells analysed on a NovoCyte Flow Cytometer.



Flow-cytometry

Flow-cytometry using anti-human IL6 antibody. LPS treated THP-1 cells were stained with an irrelevant antibody (Blue Histogram) or an anti-human IL6 antibody monoclonal antibody (Catalog # FHC15810, Green Histogram) at a concentration of 5 µg/ml for 30 mins at RT. After washing, bound antibody was detected using a FITC conjugated goat anti-mouse antibody (Catalog # PMB96441) and cells analysed on a NovoCyt Flow Cytometer.