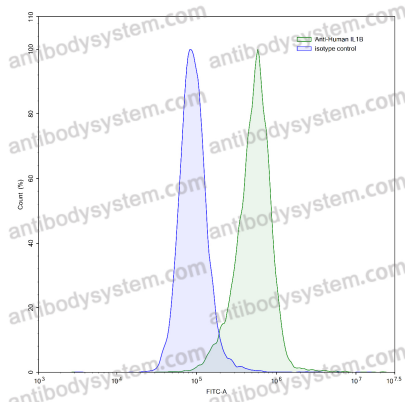


Anti-Human IL1B/IL1F2 Antibody (SAA0368)

Summary

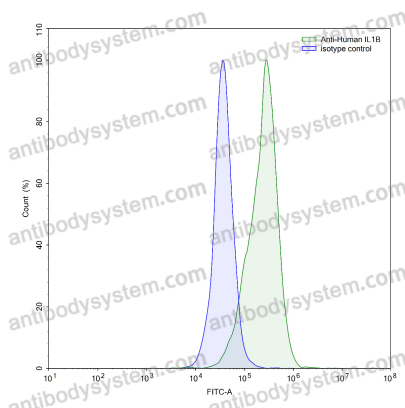
Catalog No.	FHB95610
Clone ID	SAA0368
Host species	Mouse
Conjugation	Unconjugated
Species reactivity	Human
Form	Liquid
Storage buffer	0.01M PBS, pH 7.4, 0.09% Sodium azide.
Concentration	1 mg/ml
Purity	>95% as determined by SDS-PAGE.
Clonality	Monoclonal
Isotype	IgG2a, kappa
Applications	ELISA, FCM
Target	Interleukin-1 beta, IL1B, Catabolin, IL1F2, IL-1 beta,IL-1 β
Purification	Protein A/G purified from cell culture supernatant.
Endotoxin level	Please contact with the lab for this information.
Accession	P01584
Stability and Storage	Use a manual defrost freezer and avoid repeated freeze-thaw cycles. Store at 4°C short term (1-2 weeks). Store at -20°C 12 months. Store at -80°C long term.
Note	For research use only.

Data Image



Flow-cytometry

Flow-cytometry using anti-human IL1B antibody. HeLa cells were stained with an irrelevant antibody (Blue Histogram) or an anti-human IL1B antibody monoclonal antibody (Catalog # FHB95610, Green Histogram) at a concentration of 5 µg/ml for 30 mins at RT. After washing, bound antibody was detected using a FITC conjugated goat anti-mouse antibody (Catalog # PMB96441) and cells analysed on a NovoCyte Flow Cytometer.



Flow-cytometry

Flow-cytometry using anti-human IL1B antibody. LPS treated THP-1 cells were stained with an irrelevant antibody (Blue Histogram) or an anti-human IL1B antibody monoclonal antibody (Catalog # FHB95610, Green Histogram) at a concentration of 5 µg/ml for 30 mins at RT. After washing, bound antibody was detected using a FITC conjugated goat anti-mouse antibody (Catalog # PMB96441) and cells analysed on a NovoCyte Flow Cytometer.