

Recombinant DENV-1 Envelope protein E Protein, N-His

Summary

Catalog No.	YVV19905
Alternative Names	Genome polyprotein, Capsid protein C, Core protein, Protein prM, Peptide pr, Small envelope protein M, Matrix protein, Envelope protein E, Non-structural protein 1, NS1, Non-structural protein 2A, NS2A, Serine protease subunit NS2B, Flavivirin protease NS2B regulatory subunit, Non-structural protein 2B, Serine protease NS3, 3.4.21.91, 3.6.1.15, 3.6.4.13, Flavivirin protease NS3 catalytic subunit, Non-structural protein 3, Non-structural protein 4A, NS4A, Peptide 2k, Non-structural protein 4B, NS4B, RNA-directed RNA polymerase NS5, 2.1.1.56, 2.1.1.57, 2.7.7.48, Non-structural protein 5
Form	Liquid
Storage buffer	0.01M PBS, pH 7.4.
Purity	>90% as determined by SDS-PAGE.
Applications	ELISA, Immunogen, SDS-PAGE, WB, Bioactivity testing in progress
Endotoxin level	Please contact with the lab for this information.
Expression system	E. coli
Accession	P17763
Protein length	Met577-Lys680
Nature	Recombinant
Predicted molecular weight	13.40 kDa

Recombinant Proteins & Antibodies**Stability and Storage**

Use a manual defrost freezer and avoid repeated freeze thaw cycles. Store at 2 to 8°C for frequent use. Store at -20 to -80°C for twelve months from the date of receipt.

Reconstitution

Reconstitute in sterile water for a stock solution. A copy of datasheet will be provided with the products, please refer to it for details.

Species

Dengue virus type 1 (strain Nauru/West Pac/1974) (DENV-1)

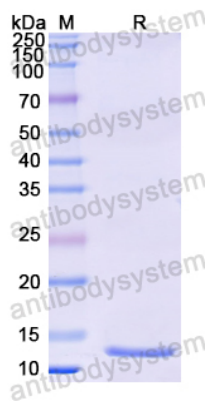
Shipping

In general, proteins are provided as lyophilized powder/frozen liquid. They are shipped out with dry ice/blue ice unless customers require otherwise.

Note

For research use only.

Data Image



SDS-PAGE

SDS PAGE for recombinant DENV-1 Envelope protein E