

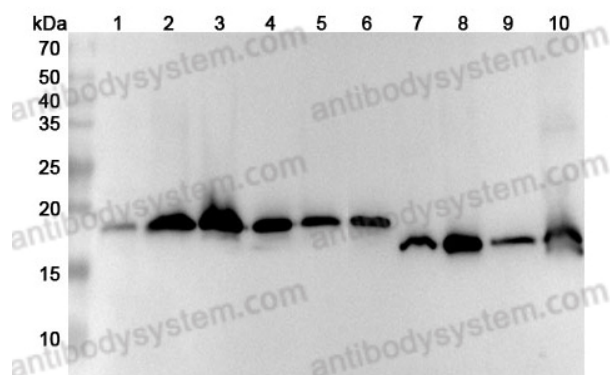
Anti-SOD1 Polyclonal Antibody

Summary

Catalog No.	PHB86001
Host species	Rabbit
Tested applications	ELISA: 1:4000-1:8000, IHC: 1:50-1:100, WB: 1:1000-1:4000
Species reactivity	Human, Mouse, Rat
Immunogen	E. coli - derived recombinant Human SOD1 (Met1-Gln154).
Form	Liquid
Storage buffer	0.01M PBS, pH 7.4, 50% Glycerol, 0.05% Proclin 300.
Clonality	Polyclonal
Isotype	IgG
Applications	ELISA, IHC, WB
Target	Superoxide dismutase [Cu-Zn],SOD1,hSod1,Superoxide dismutase 1
Purification	Purified by antigen affinity column.
Accession	P00441
Stability and Storage	Use a manual defrost freezer and avoid repeated freeze thaw cycles. Store at 2 to 8°C for frequent use. Store at -20 to -80°C for twelve months from the date of receipt.
Note	For research use only.

Data Image

Various lysates were subjected to SDS PAGE followed by western blot with SOD1 antibody (PHB86001) at 1ug/mL .



WESTERN BLOT

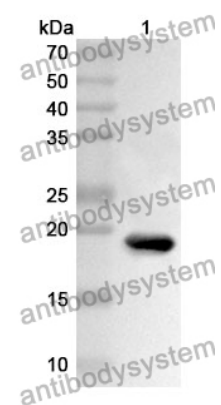
Lane 1: Hela cell lysate
 Lane 2: 293T cell lysate
 Lane 3: Jurkat cell lysate
 Lane 4: K562 cell lysate
 Lane 5: HepG2 cell lysate
 Lane 6: MCF-7 cell lysate
 Lane 7: Mouse brain lysate
 Lane 8: Mouse liver lysate
 Lane 9: Rat brain lysate
 Lane 10: Rat liver lysate

Second Ab: Goat Anti-Rabbit IgG H&L Polyclonal antibody, HRP (PTB96431) at 0.1 µg/mL.

Predict MW: 16 kDa

Observed MW: 16-20 kDa

Recombinant Protein lysates were subjected to SDS PAGE followed by western blot with SOD1 antibody (PHB86001) at 1 µg/ml.



WESTERN BLOT

Lane 1: Recombinant protein

Second Ab: Goat Anti-Rabbit IgG H&L Polyclonal antibody, HRP (PTB96431) at 0.1 µg/mL.

Predict MW: 18 kDa

Observed MW: 18 kDa