

# Anti-E.coli rpoC/RNA polymerase subunit beta Antibody (SAA0350)

## Summary

---

<b>Catalog No.</b>	RXX07501
<b>Clone ID</b>	SAA0350
<b>Host species</b>	Mouse
<b>Species reactivity</b>	Escherichia coli (strain K12)
<b>Form</b>	Liquid
<b>Storage buffer</b>	0.01M PBS, pH 7.4.
<b>Concentration</b>	0.6 mg/ml
<b>Purity</b>	>95% as determined by SDS-PAGE.
<b>Clonality</b>	Monoclonal
<b>Isotype</b>	IgG2a, kappa
<b>Applications</b>	ELISA, IP, WB
<b>Target</b>	DNA-directed RNA polymerase subunit beta', RNAP subunit beta', 2.7.7.6, RNA polymerase subunit beta', Transcriptase subunit beta', rpoC, tabB, b3988, JW3951
<b>Purification</b>	Protein A/G purified from cell culture supernatant.
<b>Endotoxin level</b>	Please contact with the lab for this information.
<b>Accession</b>	P0A8T7

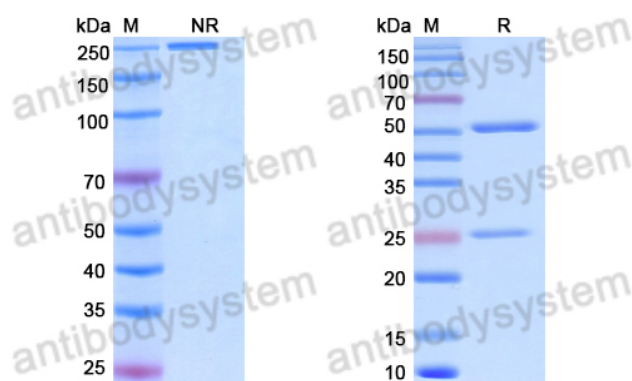
**Stability and Storage**

Use a manual defrost freezer and avoid repeated freeze-thaw cycles.

Store at 4°C short term (1-2 weeks). Store at -20°C 12 months. Store at -80°C long term.

**Note**

For research use only.

**Data Image**

SDS-PAGE

SDS PAGE for E.coli rpoC/RNA polymerase subunit beta Antibody (SAA0350)